

Summary of CEMARS[®] certification:



Viña Cono Sur S.A.

Year 1 of 3 year certificate period

Viña Cono Sur S.A. trading as Cono Sur Vineyards & Winery meets the requirements of CEMARSTM certification having measured its greenhouse gas emissions in accordance with ISO 14064-1:2006 and committed to managing and reducing its emissions in respect of the operational emissions of its organisation including the Santiago office, winery and seven vineyards (Santa Elisa, San Rafael, Peralillo (Las Lomas, Las Lomitas, Las Hijuelas), Campo Lindo, La Espuela, El Centinela and El Encanto) and excluding its sales offices in the United Kingdom and Asia



Introduction¹ – Viña Cono Sur S.A (Cono Sur) was founded in 1993, with the vision of producing premium, expressive and innovative wines conveying the spirit of the New World. Their name refers to the company’s geographic position; it represents wines proudly made in South America’s Southern Cone, on whose western edge lies Chile and its gifted wine valleys. Their logo also evokes a freehand drawing of the silhouette of South America.

Viña Cono Sur’s quest is to present the world with the finest grape expression and character, from Chile’s varied wine regions. Right from the start Viña Cono Sur applied the newest ideas and technology to winemaking’s traditional methods. Viña Cono Sur’s main goal, therefore, is to create expressive and innovative wines from one of the world’s southernmost wine regions.

Since its conception, Viña Cono Sur has been deeply committed to the development of its environmental policies, believing that high quality wine production can work hand-in-hand with eco friendly practices.

Implementation of an environment action plan has been the winery’s challenge in its global environmental project.

Viña Cono Sur began natural and integrated vineyard management in 1998. In 2000 an organic farming program started on 40 hectares of the Chimbarongo estate. In 2002 the company achieved double ISO Certification; ISO9001 and ISO14001. In 2007 new varieties of grapes were incorporated into the organic program.

Boundary – Figure 1 below shows the organisational structure used for describing the organisation’s greenhouse gas (GHG) emissions inventory, and what business units were included in the inventory in the context of the entire organisational profile. The parts of the structure (business units) in blue have been identified as being within this emissions inventory. Business units excluded from the inventory are shown in yellow.

¹**Disclaimer:** This Disclosure Statement is a summary of the verified information considered for certification and the certification decision. It should not be taken to represent the full submission for certification. Whilst every effort has been made to ensure that the information in this Disclosure Statement is accurate and complete, Enviro-Mark Solutions Limited does not, to the maximum extent permitted by law, give any warranty or guarantee relating to the accuracy or reliability of the information.

Summary of CEMARS® certification:



Viña Cono Sur S.A.

Year 1 of 3 year certificate period

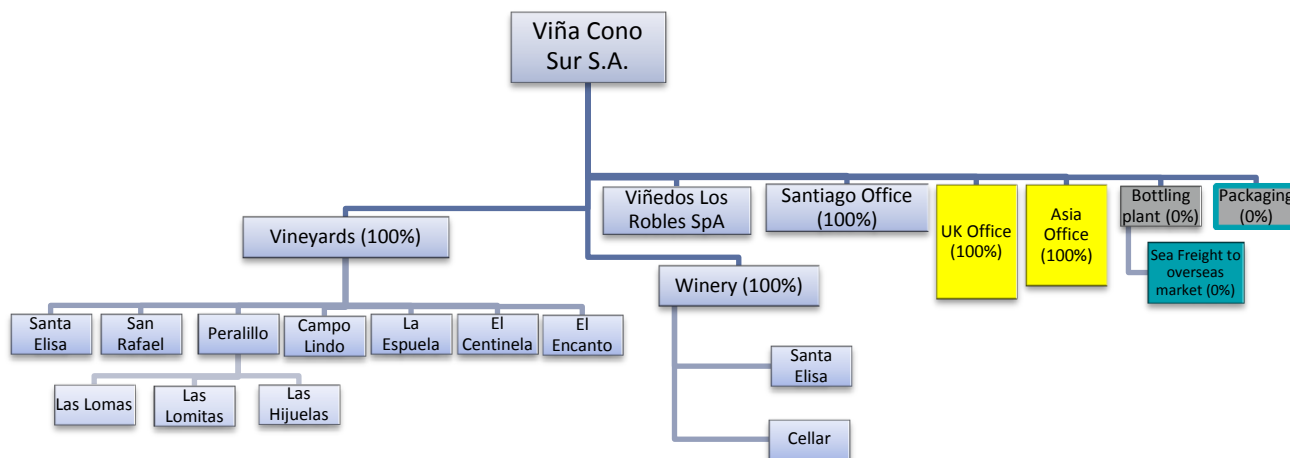


Figure 1: Organisational structure showing business units included and excluded.

Consolidation approach – The operational control consolidation approach has been used to account for operational emissions with reference to the methodology described in the GHG Protocol and ISO 14064-1:2006 standards.

Base year – 01/06/2008 to 31/05/2009

Measurement period – 01/06/2012 to 31/05/2013

Emissions source inclusions – The operational GHG emissions for the organisation by emissions source are shown in Figure 2 below.

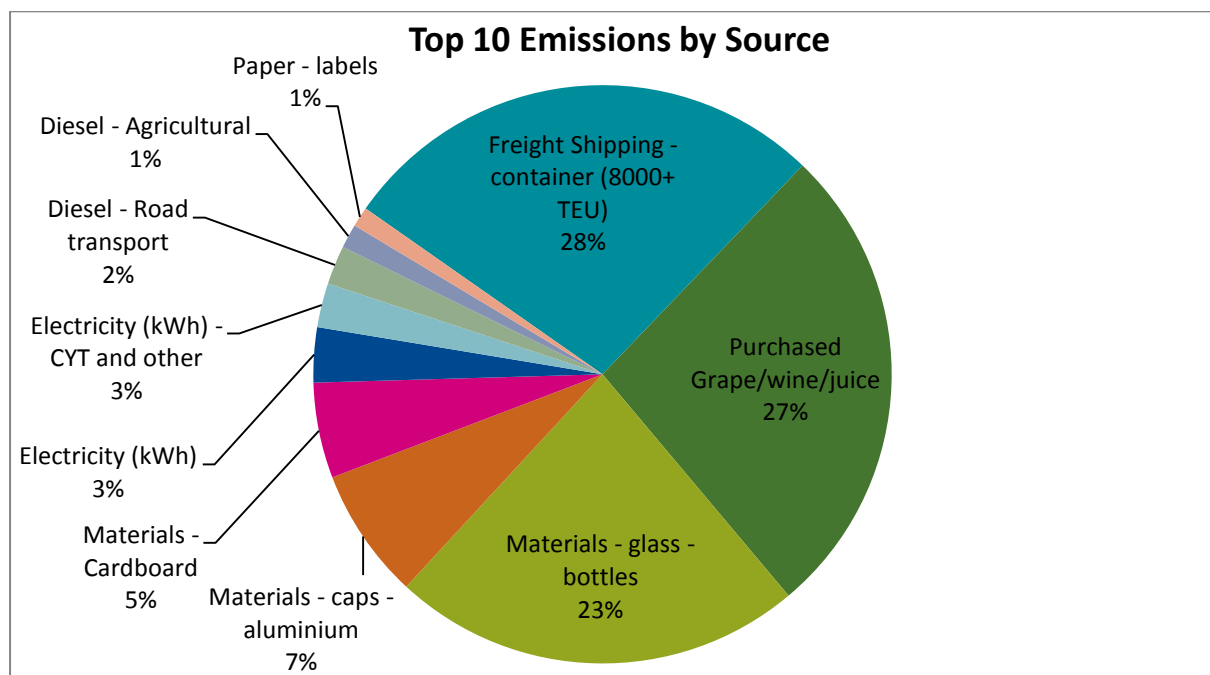


Figure 2: GHG emissions by emissions source.

Summary of CEMARS[®] certification:



Viña Cono Sur S.A.

Year 1 of 3 year certificate period

Emissions as tonnes of carbon dioxide equivalents (tCO₂e) for this period were:

Scope 1:	1,727.68	tCO ₂ e
Scope 2:	1,265.15	tCO ₂ e
Scope 3 mandatory:	13,781.10	tCO ₂ e
Scope 3 additional:	26,218.61	tCO ₂ e
Total:	42,992.54	tCO₂e

Emissions source exclusions – The following emissions sources were excluded from the inventory for this measurement period:

- Geese
- Air transport of marketing products
- Tin capsules
- Tetra paks
- Plastic wrap from pallets

Emissions reduction commitments – A GHG emissions management plan and reduction targets have been developed.

- Consider and manage emissions on the transport delivery from warehouse to port
- Manage electricity consumption in Santiago Office
- Reduce emissions in the transport sector
- Manage energy efficiently

Emissions reductions summary against last year's plan – A reduction of 20 tCO₂e per 1000 litres of wine has been achieved since the last year. A reduction of 73 tCO₂e per 1000 litres of grape has been achieved since the last year.

Verified by – Enviro-Mark Solutions Limited

Data quality score – High

Threshold of materiality – Excluded emissions do not exceed 5% of the total footprint within the organisation boundary stated.

Level of assurance – Reasonable scope 1 & 2, limited scope 3

Certification status – CEMARS certified organisation

Certificate number – 2014033J, Year 1 of 3 year certificate period

Valid until – 30 April 2017

Viña Cono Sur S.A. 481 Torre Sur, Office 2101, Las Condes, Santiago, Chile.
Tel: (+56-2) 476 5090; Email: alapostolcs@conosurwinery.cl; Web: www.conosur.com.